



LaserGasPatroller LGP 900 | 800

Vehicle-based gas network survey:
with the SeCuRi® SAT software system

✓ ***Consolidate data from
vehicle and manual
leak detection***



Locate gas indications and document emissions.

Work with maximum efficiency

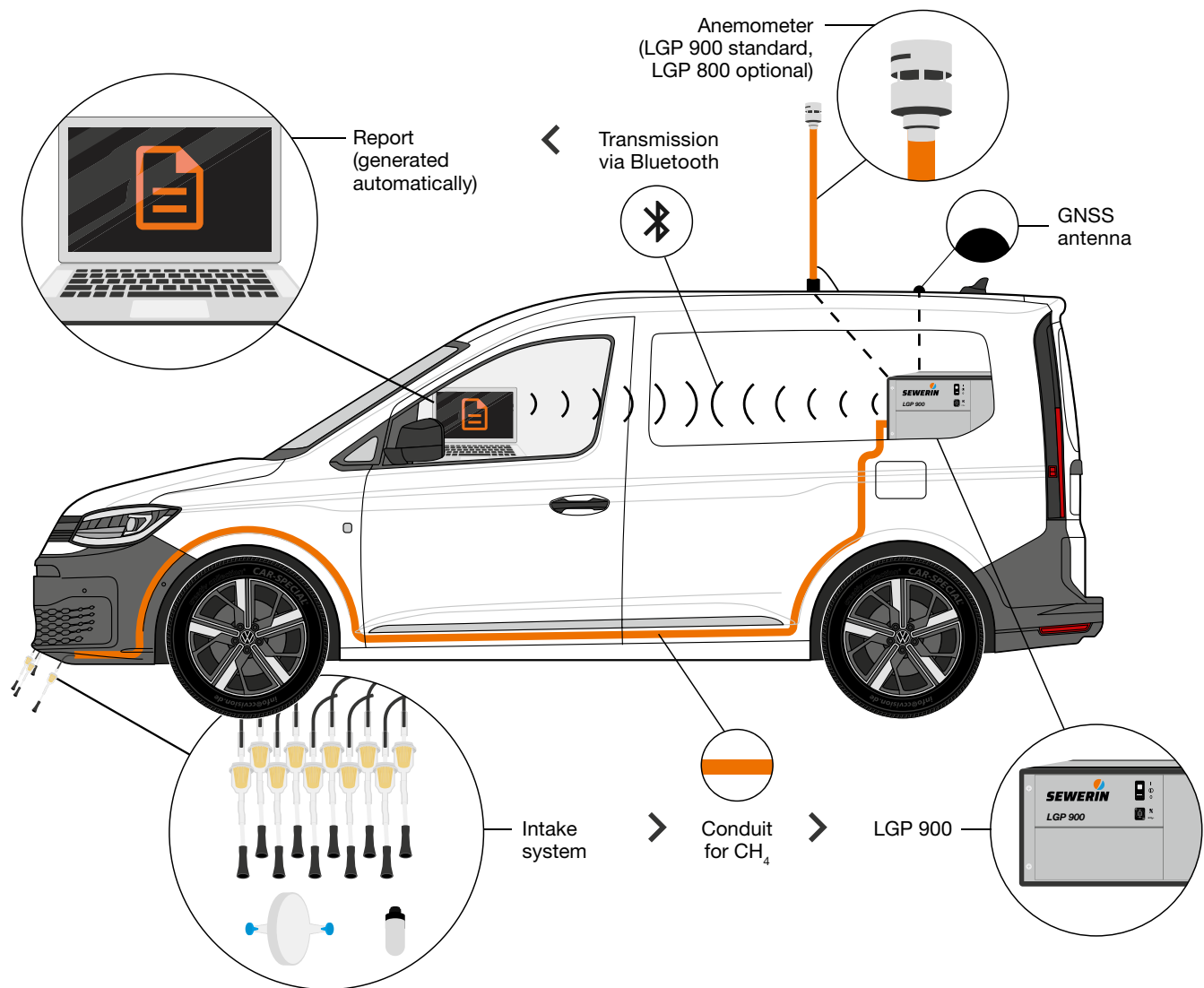
Whether vehicle-based inspection or manual leak detection on foot: SeCuRi® SAT consolidates the results of both methods and creates a continuous, consistent data basis.

Create LDAR reports easily

Import GIS data and export gas indications, inspection areas and checked assets. Create legally compliant reports for Leak Detection and Repair (LDAR) and document CH₄ emissions in accordance with standards.

Fair price model. Full data control

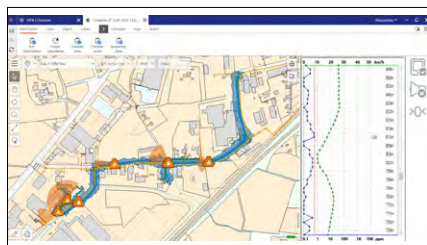
You purchase the software licence once. The annual maintenance costs remain manageable, and your data remains in your control at all times.



Even more benefits for you:



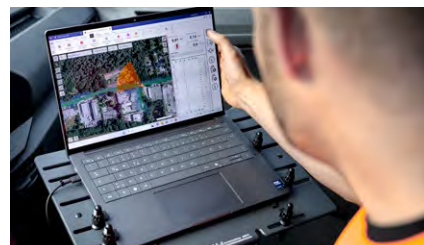
- + Detect methane – no interference with other gases
- + Perfect for everyday use: suitable for washing facilities thanks to removeable wind gauge, easy filter replacement, Bluetooth connection
- + Reduce test gas consumption to a minimum with automatic device check
- + Reduce operating costs thanks to low power consumption – no additional battery for vehicle
- + Trace and record emissions
- + Automated data logging
- + Suspected leak areas and inspected area visible
- + Flexibly integrate maps
- + Easily export reports and evidence
- + Easily swap devices to inspect areas that cannot be navigated: seamless cooperation with the EX-TEC® HS 680, VARIOTEC® 480 EX and PORTAFID® devices
- + Ensures seamless, fully automatic recording of all relevant measurement data – from the location to the gas concentration to linking the gas indication to the inspected asset



SeCuRi® SAT software



Example of installation in the vehicle



Simple and clear display

“Using the LaserGasPatroller LGP 800 in our electric vehicles makes us one of the first companies in Austria to be prepared for the requirements of the EU Methane Regulation – while being consistently focussed on sustainability.”

Ferdinand Magditsch, Group leader of gas detection personnel, Wiener Netze (Austrian distribution network operator)



Flexible in any vehicle. Powerful in everyday use.

- + Universally applicable with almost all vehicle types – including electric vehicles
- + The system can be installed by our own vehicle upfitting workshop or by one of our certified contracting parties
- + Wireless connection to tablet or laptop (Windows) via Bluetooth – it doesn't get any easier

Select your system

Feature	LGP 900	LGP 800
Create LDAR report	OGMP 2.0	OGMP 2.0
Resolution CH ₄	0.01 ppm	0.1 ppm
Wind gauge (anemometer)	✓	Optional
Applications	large-scale identification of suspect areas (approx. 131 ft)	inspection area: approx. 9-16 ft beside the path (with wind gauge) or only on the path (no wind gauge)
Number of passages	1	1
SeCuRi® SAT 7 Documentation creates the finished LDAR report (expected from Q4-2025)	✓	✓
Seamless device replacement within SeCuRi® SAT from LGP to HS 680, VT 480 and PORTAFID®	✓ Integration via SeCuRi® SAT software	✓ Integration via SeCuRi® SAT software
No interference	✓	✓
Measurement system operated via the conventional vehicle power supply network	✓	✓
Accuracy of the satellite positioning	within inches	accurate to 8.2 ft
Speed during pipe network inspection	approx. 18 mph	approx. 18 mph



Sewerin in the USA and Canada



Lutz Hörnschemeyer

Sales Manager

Hermann Sewerin GmbH

☎ +1 888 592 9916

☎ +1 888 592 9916 ext. 103

✉ lutz.hoernschemeyer@sewerin.com

🌐 sewerin.com

109655 – 09/2025

Subject to technical changes.